

**UPRAVA ŠUMA PODRUŽNICA BJELOVAR
RASADNIČARSTVO BJELOVAR**

Elaborat
Pripreme rada vađenja sadnica u rasadniku
Zdenački gaj

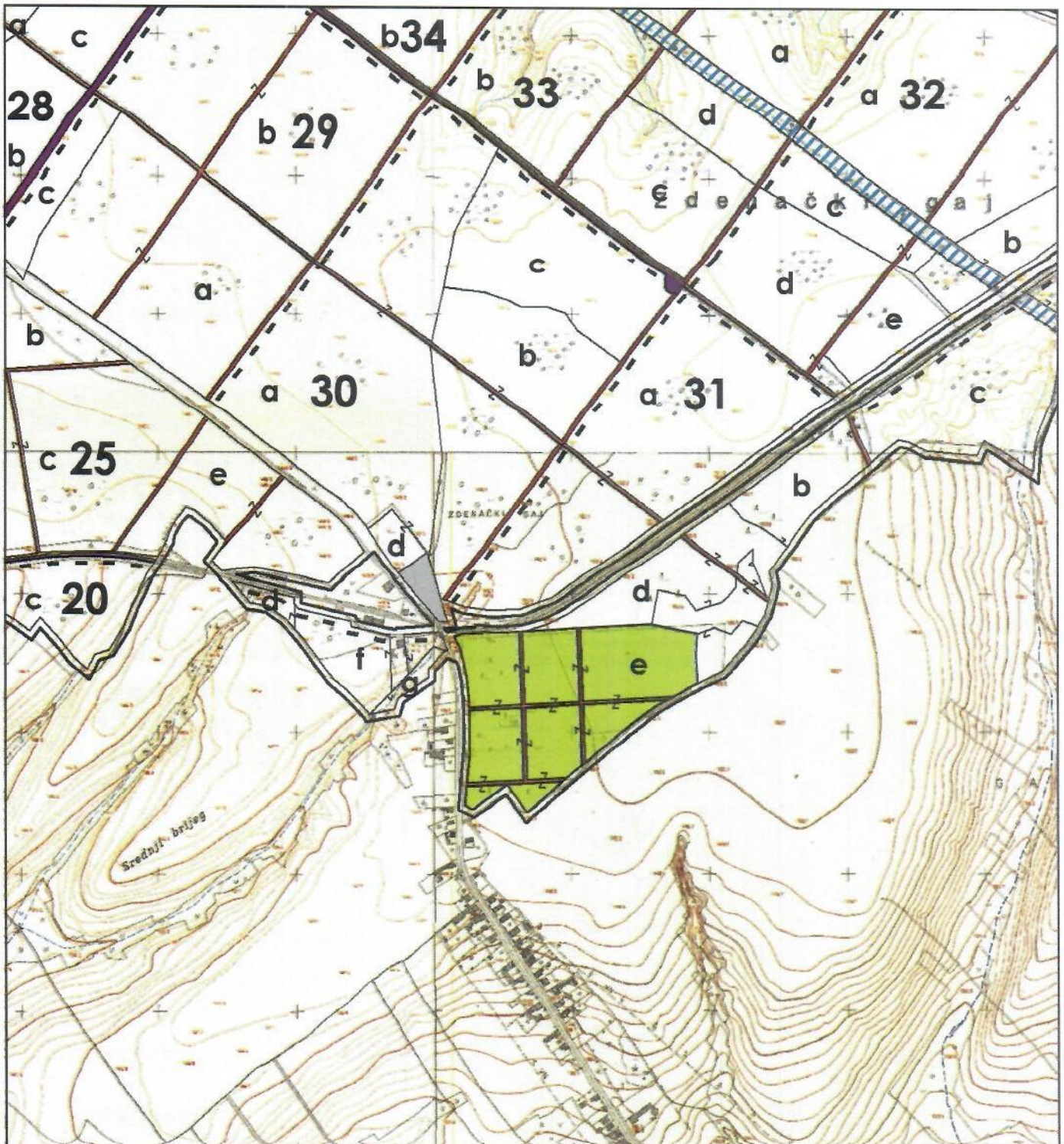
Elaborat izradio:


Denis Kazda
dipl. ing. šum.
ovlašten inženjer šumarstva




HRVATSKE ŠUME d.o.o.



Š 985



LEGENDA:

-  vađenje sadnica h. lužnjaka 2+0, 3+0
-  šumska cesta
-  prosjeka

